

MONTHLY MEMBERSHIP PROGRESS REPORT

LOCATION INDIA

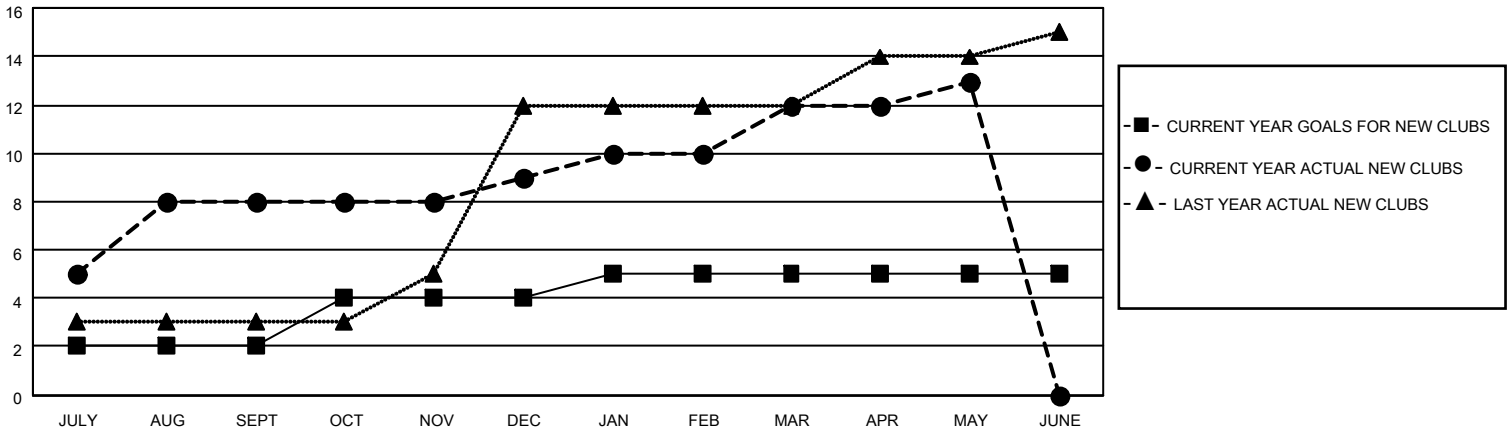
District 322 A

Results as of: 5/31/2022

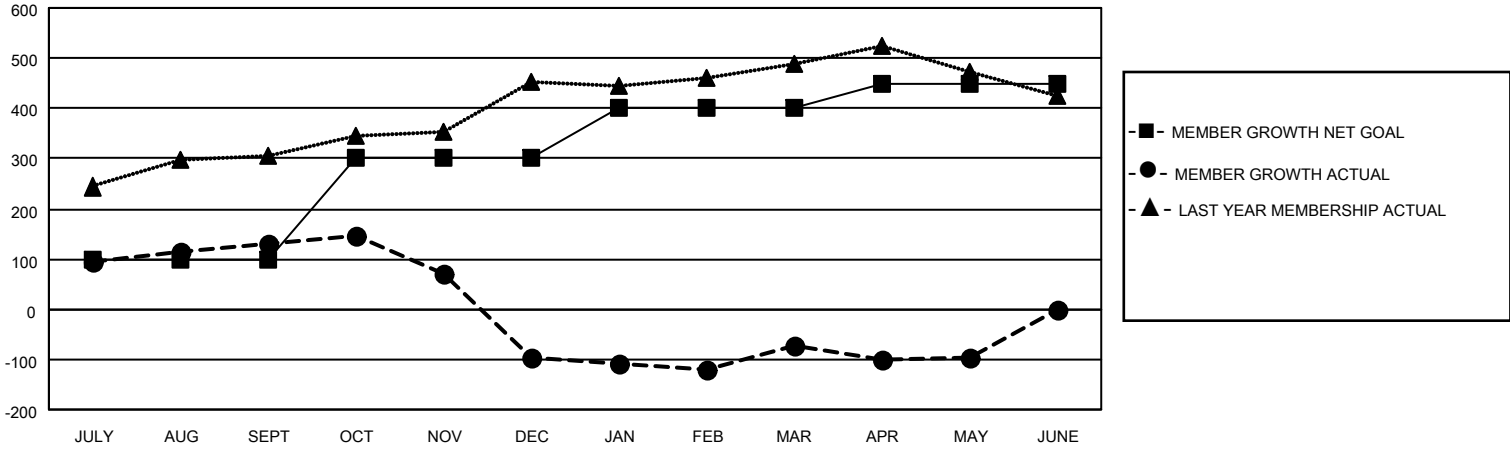
Clubs			
RESULTS FOR 2021-2022			
QUARTER	NEW CLUB GOAL	NEW CLUBS	DROPPED CLUBS
JULY/AUG/SEPT	2	8	3
OCT/NOV/DEC	2	1	4
JAN/FEB/MAR	1	3	2
APR/MAY/JUNE	0	1	0

Members			
RESULTS FOR 2021-2022			
QUARTER	MEMBER GROWTH NET GOAL	MEMBER GROWTH ACTUAL	DROPPED MEMBERS ACTUAL (including transfers)
JULY/AUG/SEPT	100	343	197
OCT/NOV/DEC	200	72	299
JAN/FEB/MAR	100	151	106
APR/MAY/JUNE	50	63	71

GOALS AND ACTUAL NEW CLUBS CUMULATIVE



GOALS AND ACTUAL MEMBERS CUMULATIVE



DROPPED CLUBS: 9	
DROPPED MEMBERS	
DECEASED	16
CLUB CANCELLED	79
OTHER	578
TOTAL	673

56 CLUBS OF 100 ADDED 1 OR MORE NEW MEMBERS

[CLICK HERE FOR CUMULATIVE MEMBERSHIP DATA](#)

<u>GENDER DISTRIBUTION</u>	
MALE	2,313 (67.81%)
FEMALE	1,097 (32.16%)
NON BINARY	0 (0.00%)
PREFER NOT TO ANSWER	1 (0.03%)
TOTAL FAMILY UNIT MEMBERS	1,655
FAMILY MEMBERS PAYING HALF DUES	901